



iSmartViewPro Quick Installation Guide

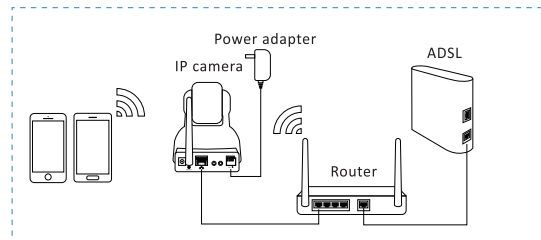
Tips:

This is Quick Installation Guide, for more detailed instruction, please download it by this link: <http://cd.ipcamdata.com>.

iSmartViewPro Quick Installation Guide

1. Power on camera
2. Download APP
3. Connect to network

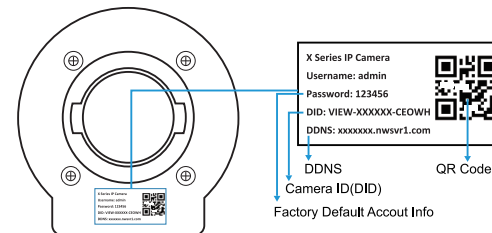
Power on camera



- Please make sure the camera is in the same room, close to the router, before performing the setup. Then, using the included power supply, connect to Power.
- Connect your mobile phone with 2.4G WiFi. (5G is not supported for the camera) If you are using a dual band router, make sure your 2.4G WiFi name is different from your 5G one.

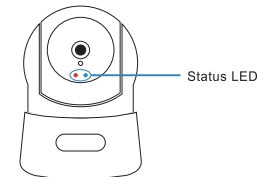
Tips:

You can relocate it to where you want after it is all set up. You just unplug it and move it to the new location and plug it in, the camera will connect to your WiFi automatically, no need to set it up again. But please make sure the new location will not be far from your router.



Camera ID & QR Code label

- You can find the camera ID and QR code in the label on the camera.



- Status LED
- Solid Light
- Blinking Slowly
- Blinking Quickly

Indicator Light Status	Device Status
Red light is blinking slowly	Power up and activating
Red and blue lights are blinking slowly	The device is ready to connect
Blue light is blinking quickly	The device is receiving the wifi signal or connecting to the wifi
Blue and red lights are solid and steady	The device is connected to the network
Red light is blinking quickly	The device is restore to factory default
Blue light goes off	The device failed to connect to the network

Download APP

1. Go to the App Store or Google Play to search and download "iSmartViewPro" APP to your smart phone or tablet.



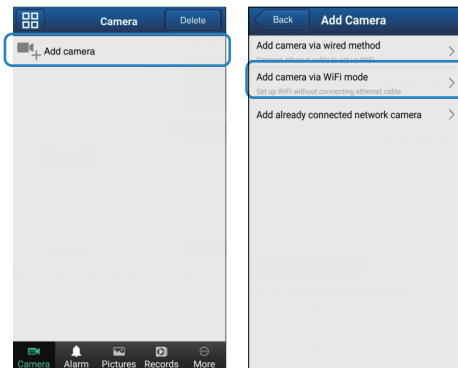
iSmartViewPro icon

2. Or scan the QR code below to get the app.

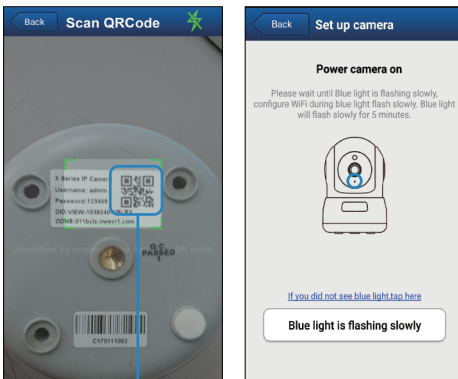


Connect to network

1. Click on "Add Camera" and "Add Camera via WiFi mode".

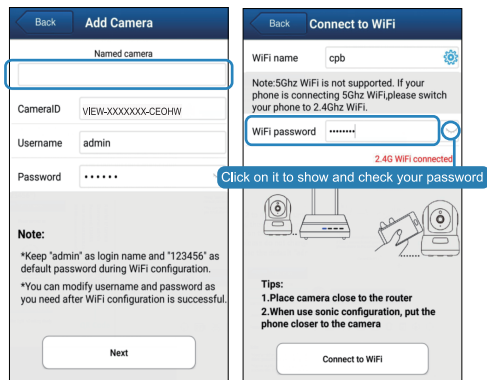


2. Scan the QR code on the back of the camera
3. Hold "Reset" button about 3-5 seconds until you see the blue light is on.



QR Code

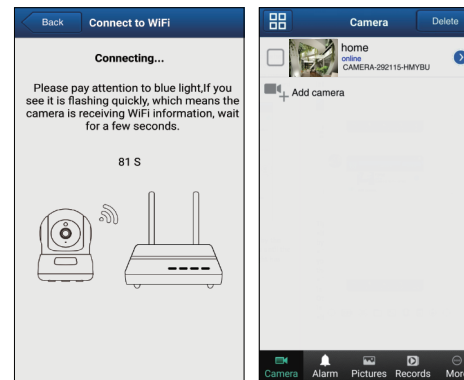
4. Name the camera, then [Next].
5. Input your WiFi password and click on [Connect to WiFi]



6. Use the camera to Scan the QR Code, Click on [Blue light has quickly flashed] when the blue light flashes quickly.



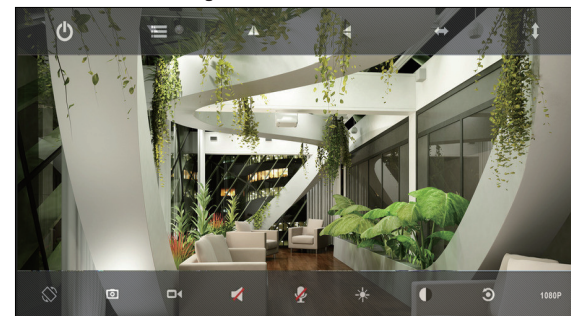
7. When the camera receives WiFi signal, it will sound 2 beeps.
8. You should see it says online. Congratulations! Your camera is all set up. Click on the image to enjoy viewing and controlling it now



Tips:

- If you have several cameras, please configure them one by one. This process will only work for one camera once.
- The camera is a 2.4GHz wifi based one. Please make sure your phone is connected to your 2.4GHz wifi before doing the setup.
- After the camera is booted, press and hold the Reset button for 3 to 5 seconds until the blue light flashes.

9. Turn on the online camera to adjust the parameters and real-time monitoring



10. If you forgot the password, hold down the "Reset" button for around 10-12 seconds until you see the red light is blinking very fast, let it go. And then the camera will be restored to factory default. The default username /password: admin/123456. Please do the setup of the camera again as what you did.

